

TAZA
Polymer®

MINING CATALOGUE

ENGINEERING POLYMER SOLUTIONS



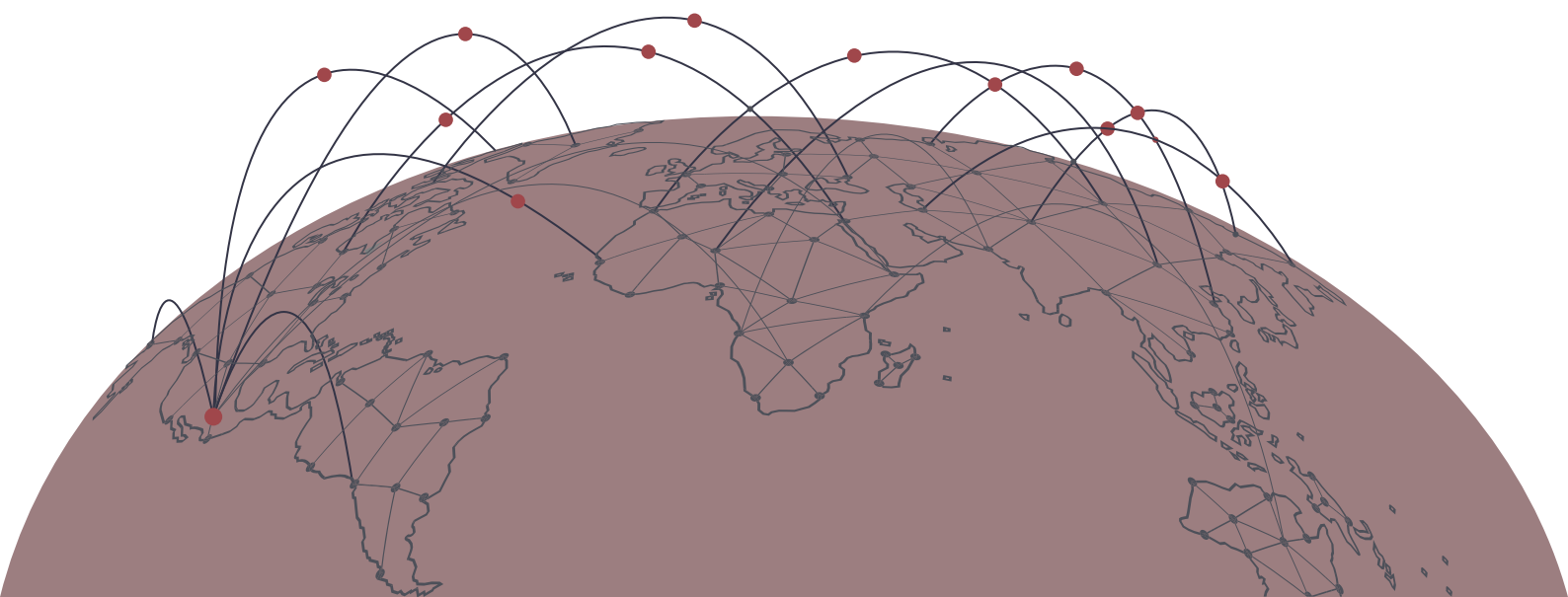
ABOUT US

For more than 50 years, Elastómeros Taza has committed to the development, innovation, production and commercialization of thousands of proprietary polymeric formulations, thereby establishing our leadership in a wide range of products.

We have a state of the art R&D department, where we design formulations and materials from a molecular level, which allows our products to be perfected according to the specific needs of our customers, depending on their application.



We are established in more than 30 countries, including the United States, Canada, Australia, Brazil, Chile, Colombia, Peru, Argentina and others.



OUR PRODUCTS

Elastómeros Taza is a **ISO-9001-2015** certify company, which guarantees the quality of our formulations as well as the production processes of all the products we supply.

We are also the only company in Mexico that holds the license for the production of VULKOLLAN™, one of the most abrasion and temperature resistant polymers in the world, licensed by Covestro (Bayer AG).

TECHNOLOGY

Elastómeros Taza is at the forefront of the latest international product developments. We have two facilities were we produce polymers, the tooling and molds required for the manufacture of parts and their machining. We also have infrastructure for the development, manufacturing, inspection and quality control with the most advanced technology.

Some of our equipment:

- C.N.C. Machining Centers.
- 5 Axis Vertical Machining Centers.
- Welding Robots.
- Metering Machines.
- Reactors.
- Scanners.
- Tensile Testers.
- Abrasion Tester.
- Resiliometer.
- Automatic Titrators.
- Others.



OUR PRODUCTS

The engineering polymers that are produced by Elastómeros Taza, stand out for their characteristics of resilience as well as their resistance to:

- Abrasion.
- Impact.
- Tensile.
- Elongation.
- Tear.
- Corrosion.
- Ozone, Oils, Solvents.
- Weathering.



Our highly engineered polymers will outperform conventional materials such as rubber, polyurethane, steel, engineering plastics and ceramics. Our products range in hardness from shore "000" (Gel) to 85° Shore "D", and can withstand temperatures ranging from -140°F to 302°F.

COMPATIBLE WITH:	PAGE
Warman Type 4" X 3" -----	3
Warman Type 6" X 4" -----	3
Warman Type 8" X 6" -----	4
Warman Type 10" X 8" -----	4
Warman Type 12" X 10" -----	5
Warman Type 250 MCR -----	5
Warman Type 350 MCR -----	6
Warman Type 550 MCR -----	6
Ash Type 125 MCC -----	7
Ash Type 150 MCC -----	7
Ash Type 200 MCC -----	7 / 8
Denver Type 5" x 4" -----	8
Tsurumi 6110 Type -----	8
Galigher Type 2.5" x 48" -----	9
Galigher Type 3.5" x 48" -----	9
Galigher 5000 Type 3" -----	10
Galigher 5000 Type 4" -----	10
Galigher 5000 Type 6" -----	11
Galigher 5000 Type 8" -----	11
Impact Plates / Chute Liners -----	12
Skirt Board -----	12
Screen Panels -----	13
Belt Cleaners -----	14
Polymer Pulley Inserts -----	15
Knife Valve Seats -----	16
Sprayable Polymer -----	17
Taza® Wear -----	18
Taza Flex® 70 & 80 -----	19/20
Taza® Backing -----	21

WARMAN TYPE 4" X 3"



Cover Plate Liner

/ 4" x 3"



Frame Plate Liner

/ 4" x 3"



Impeller

/ 4" x 3"

WARMAN TYPE 6" X 4"



Frame Plate Liner

/ 6" x 4" DAH



Frame Plate Liner

/ 6" x 4" EAH



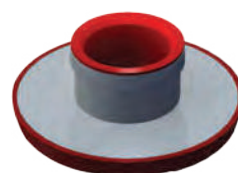
Impeller

/ 6" x 4"



Cover Plate Liner

/ 6" x 4"



Throatbush

/ 6" x 4"



WARMAN TYPE 8" X 6"



Frame Plate Liner

/ 8" x 6"



Cover Plate Liner

/ 8" x 6"



Throatbush

/ 8" x 6"



Impeller

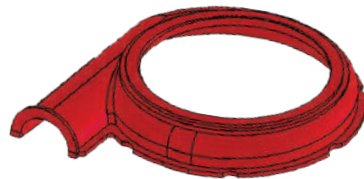
/ 8" x 6"

WARMAN TYPE 10" X 8"



Frame Plate Liner

/ 10" x 8"



Cover Plate Liner

/ 10" x 8"



Throatbush

/ 10" x 8"

WARMAN TYPE 12" X 10"



Frame Plate Liner

/ 12" x 10"



Cover Plate Liner

/ 12" x 10"



Throatbush

/ 12" x 10"

WARMAN TYPE 250 MCR



Frame Plate

/ 250 MCR



Cover Plate Liner

/ 250 MCR



Throatbush

/ 250 MCR



Cover Plate Liner

/ 250 MCR

WARMAN TYPE 350 MCR



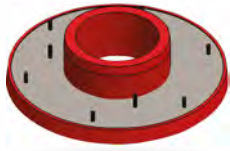
Frame Plate Liner Insert

/ 350 MCR



Frame Plate Liner

/ 350 MCR



Throatbush

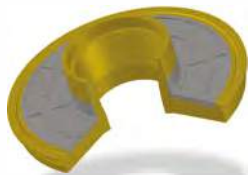
/ 350 MCR



Cover Plate Liner

/ 350 MCR

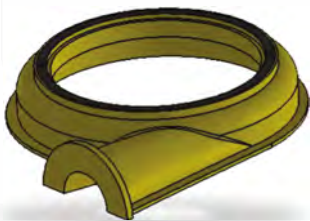
WARMAN TYPE 550 MCR



Throatbush

/ 550 MCR

ASH TYPE 125 MCC



Frame Plate Liner

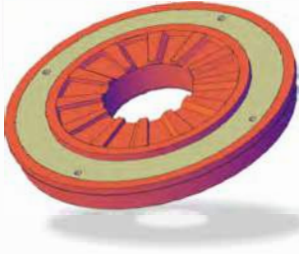
/ 125 MCC



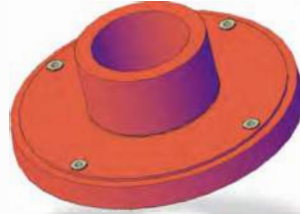
Cover Plate Liner

/ 125 MCC

ASH TYPE 125 MCC



Frame Plate Liner Insert
/ 125 MCC



Throatbush
/ 125 MCC

ASH TYPE 150 MCC



Frame Plate
/ 150 MCC



Cover Plate Liner
/ 150 MCC



Frame Plate Liner Insert
/ 150 MCC



Throatbush
/ 150 MCC

ASH TYPE 200 MCC



Frame Plate
/ 200 MCC



Cover Plate Liner
/ 200 MCC



ASH TYPE 200 MCC



Frame Plate Liner Insert

/ 200 MCC



Throatbush

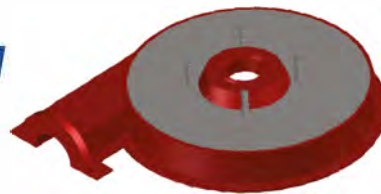
/ 200 MCC

DENVER TYPE 5" X 4"



Cover Plate Liner

/ 5" x 4"



Frame Plate Liner

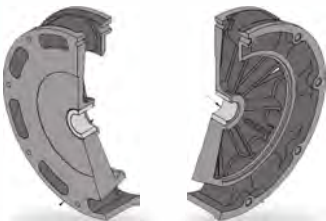
/ 5" x 4"



Impeller

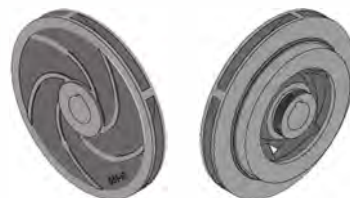
/ 5" x 4"

TSURUMI 6110 TYPE



Cover Plate

/ 6110



Impeller

/ 6110

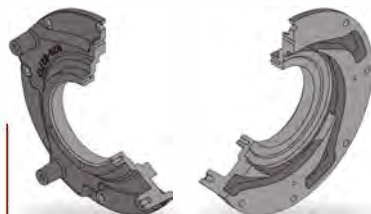


Plate Liner

/ 6110

GALIGHER TYPE 2.5" X 48"

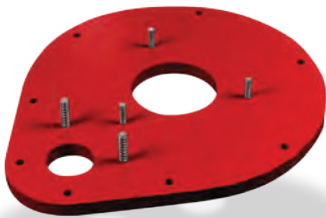


Plate Liner

/ 2.5" x 48"



Cover

/ 2.5" x 48"



Impeller

/ 2.5" x 48"

GALIGHER TYPE 3.5" X 48"

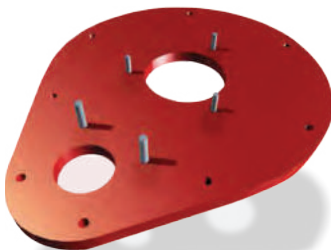


Plate Liner

/ 3.5" x 48"



Cover

/ 3.5" x 48"

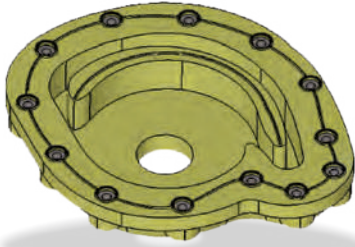


Impeller

/ 3.5" x 48"

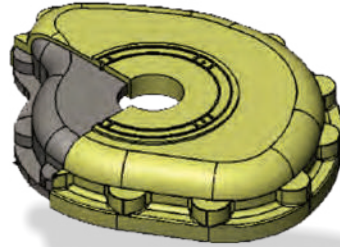


GALIGHER 5000 TYPE 3"



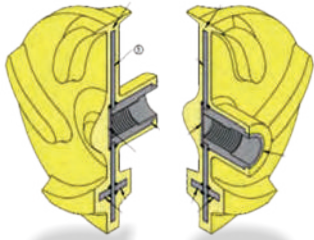
Cover Plate

/ 5000 3"



Cover Plate

/ 5000 3"



Impeller

/ 5000 3"

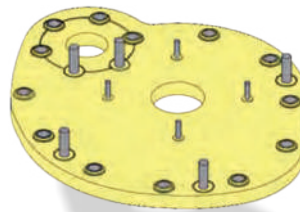
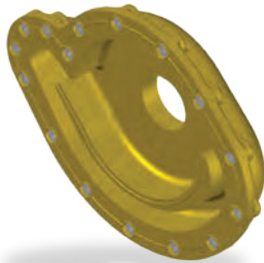


Plate Liner

/ 5000 3"

GALIGHER 5000 TYPE 4"



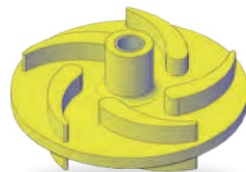
Cover Plate

/ 5000 4"



Plate Liner

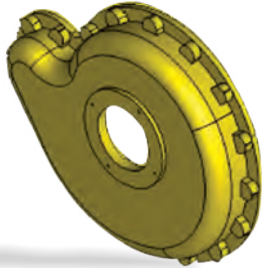
/ 5000 4"



Impeller

/ 5000 4"

GALIGHER 5000 TYPE 6"



Cover Plate

/ 5000 6"

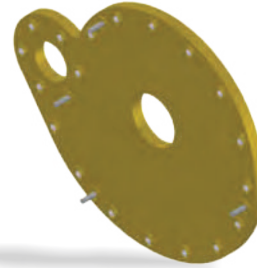
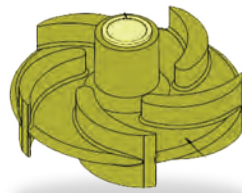


Plate Liner

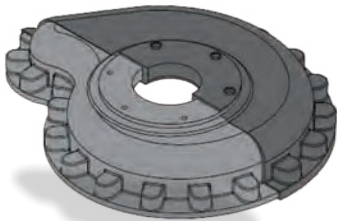
/ 5000 6"



Impeller

/ 5000 6"

GALIGHER 5000 TYPE 8"



Cover Plate

/ 5000 8"

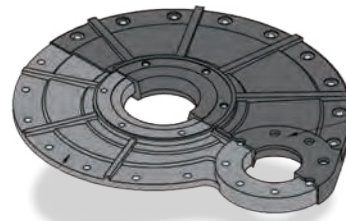
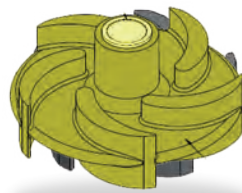


Plate Liner

/ 5000 8"



Impeller

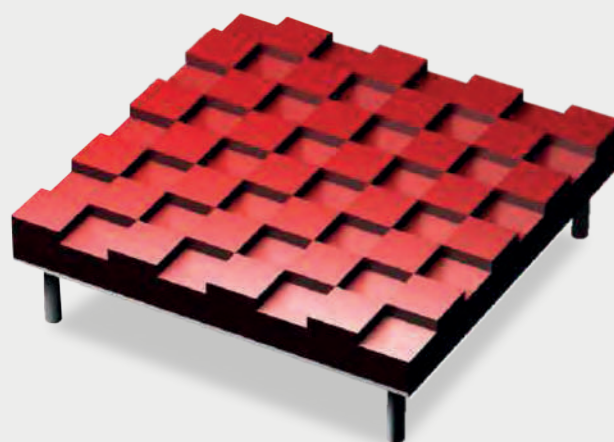
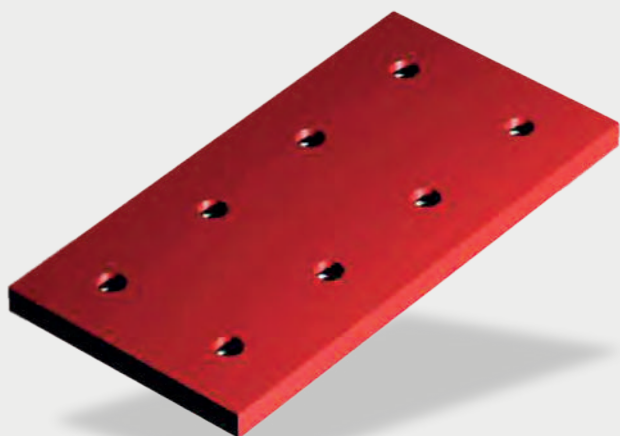
/ 5000 8"

IMPACT PLATES / CHUTE LINERS

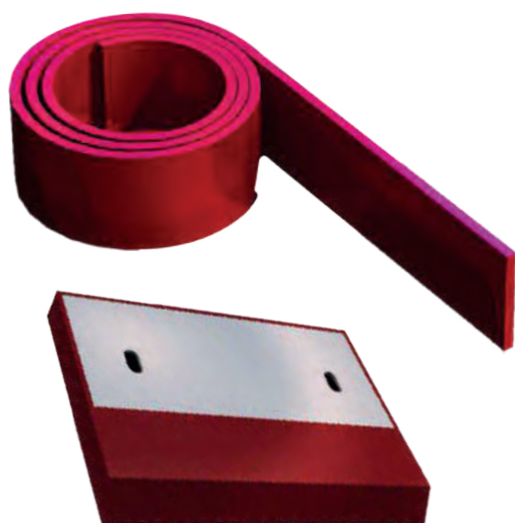
Molecularly designed with high abrasion resistance polymers, containing special additives to prevent mineral adhering.

Ideal for use in mining, concrete and glass plants, they are used for the lining of chutes or hoppers to protect them from abrasion and impact caused by mineral, stones, clays or glass. They are easy to install as they have drilled holes for anchoring with screws and steel washers embedded in the material to give greater support, making them more resistant to impacts and vibrations caused by minerals.

The standard size are: 40" long by 20" wide: 1.5", 2" and 3" in thickness all with 8 holes of 5/8" screw box. They can be tailor made in several formulations.



SKIRT BOARD



Made of high wear resistant materials. Ideal for mining industry applications and for all types of contact with abrasive materials. Its primary function is to reduce the fugitive dust and avoid mineral loos.

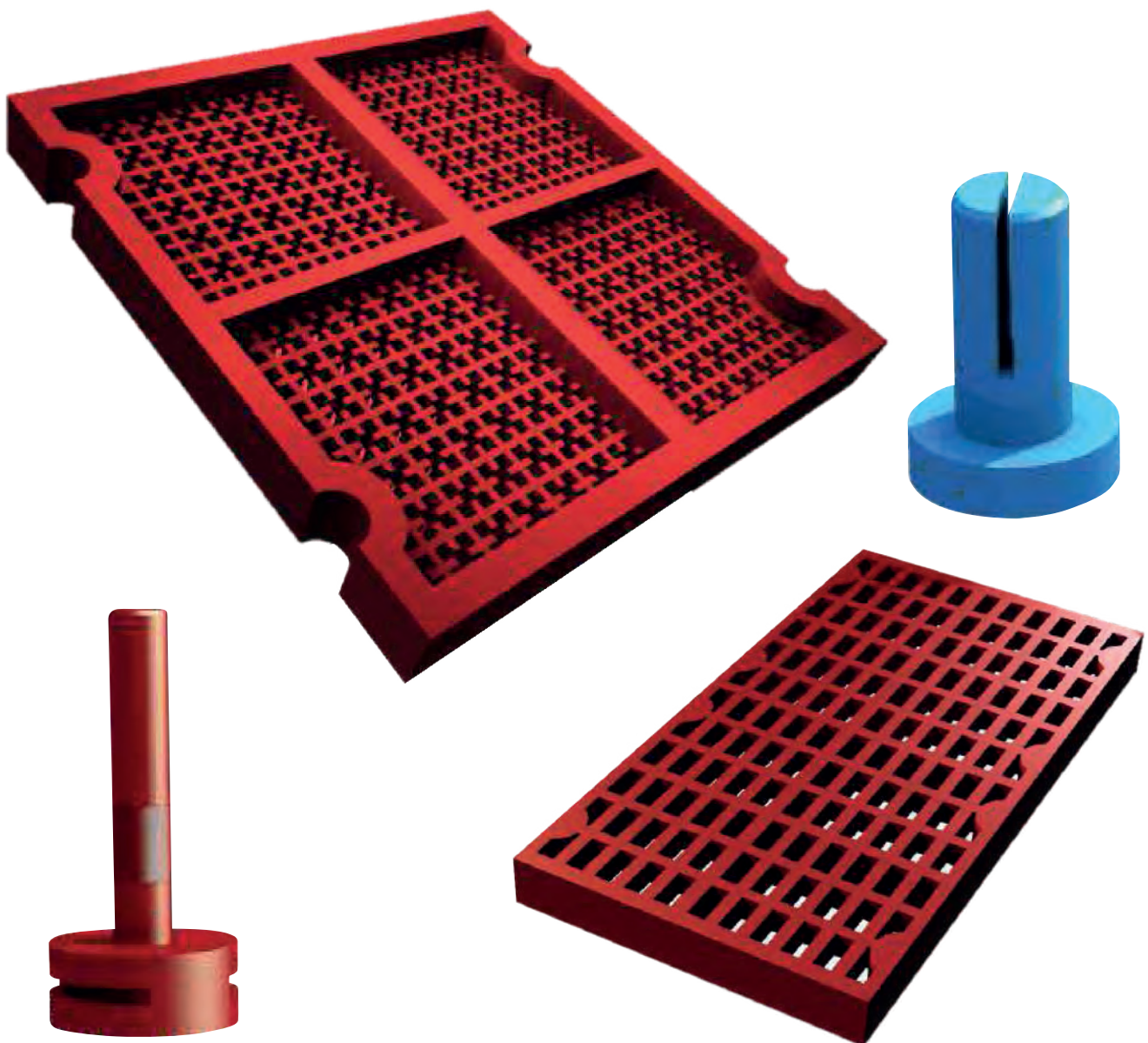
SIZES:

Rolls from 1/4" to 1" in thickness x 120" long in the following widths: 4", 6", 8", 10", 12", 20" and 24".

SCREEN PANELS

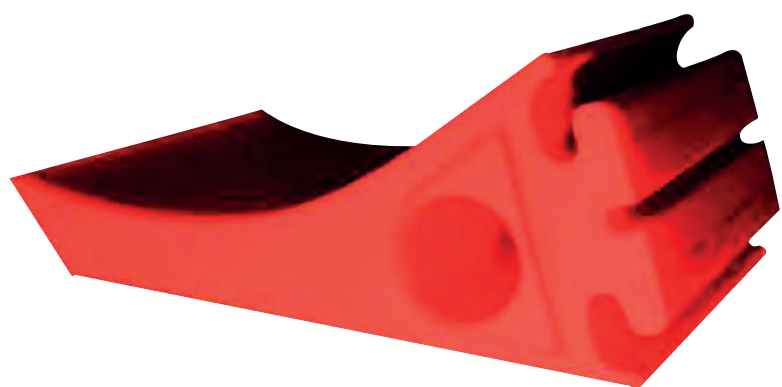
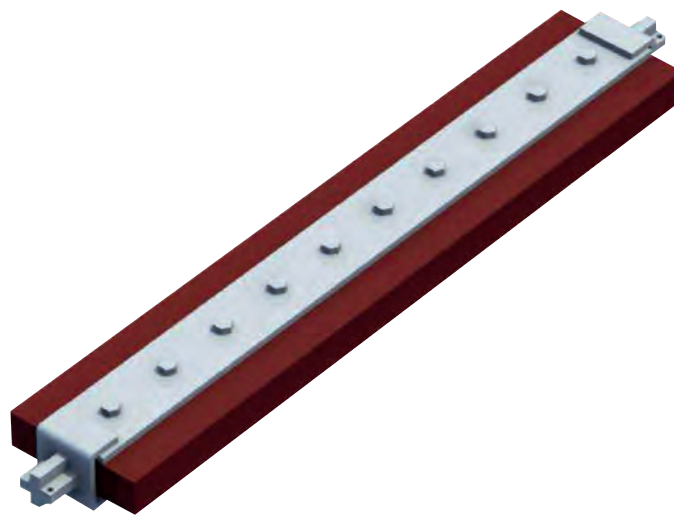
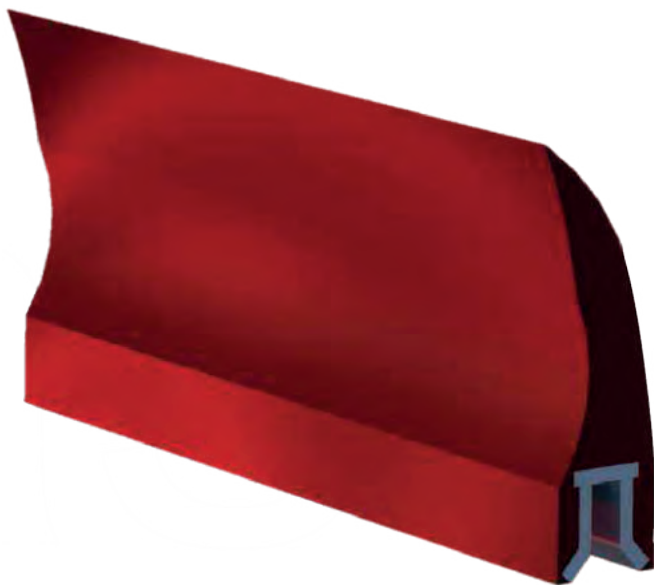
Features & benefits:

- Any particle size.
- Long service life.
- Screening efficiency.
- Significant or total reduction of clogging and incrustations of materials.
- Impact and abrasion resistance.
- Corrosion resistance.
- Reduce downtime due to sieve replacements.
- Noise reduction.
- Any fix configuration.



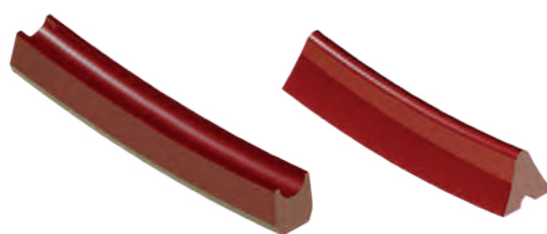
BELT CLEANERS

Our Taza Polymer Belt Scrapers are manufactured for conveyor belts from 18" to 72" width and can be installed on the existing structure.



POLYMER PULLEY INSERTS

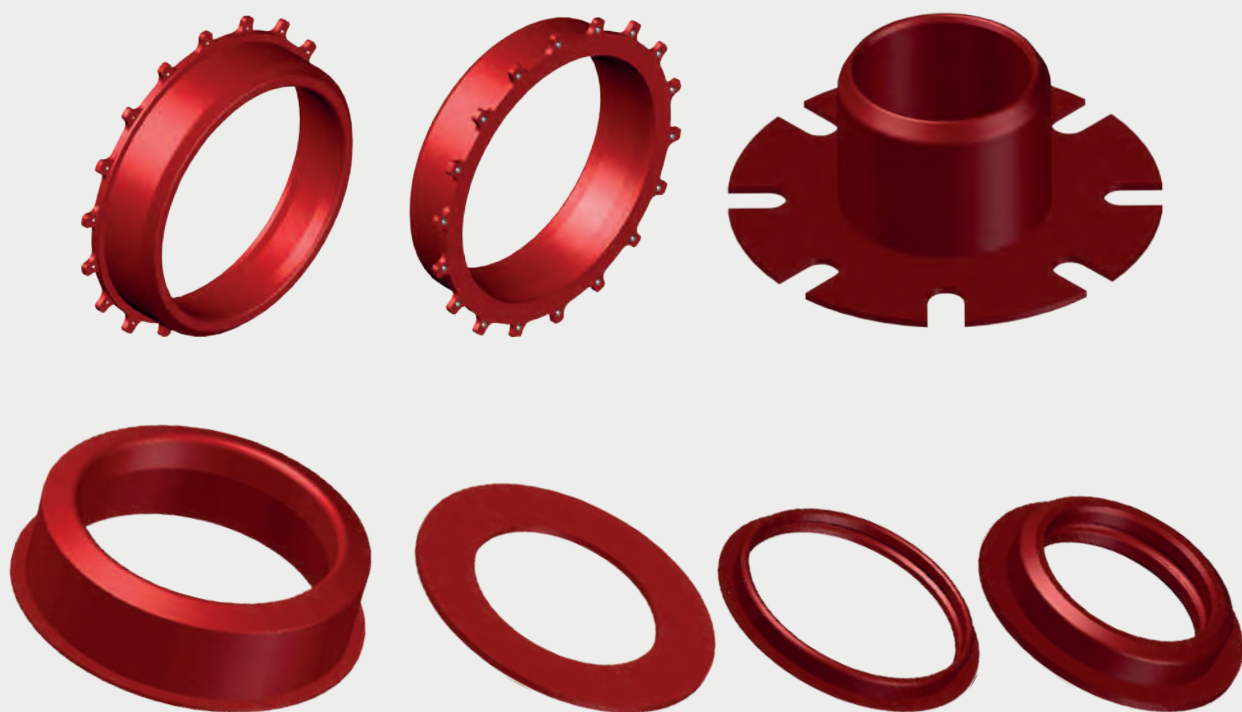
Used to coat the driving pulley, in order to protect them from the abrasion produced by the winch dragging. They are manufactured for steel cables, from 1/2", 3/4", 1", 1 1/4", 1 1/2" and 2" in diameter.



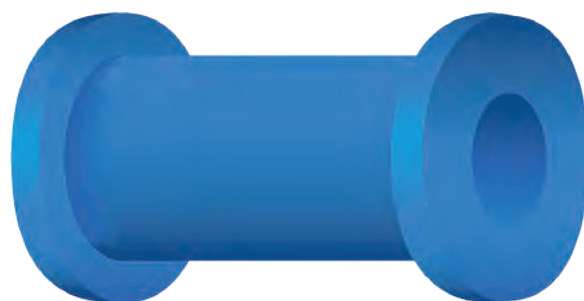
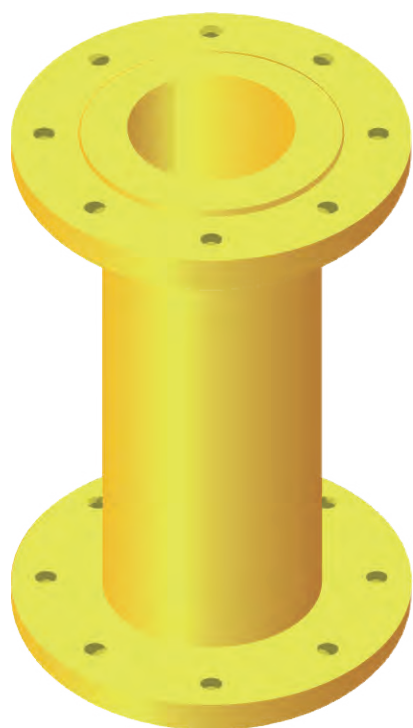
| LINED PIPE & FITTINGS |



KNIFE VALVE SEATS



| Pinch Valve Inserts |



Benefits:

Longer durability than conventional or natural rubber, EPDM or other elastomers, due to their high resistance to abrasion, tearing, bacteria, salinity and environment, amongst others.

SPRAYABLE POLYMER



Suitable for protection against abrasion and oxidation on any type of surface.

Tanks, flotation cells, concrete, railroad cars, trucks or wagons, etc.



TAZA® WEAR

Use Taza® Wear - A durable material that provides reliability and quality.

It is a two-component polymer used to repair different parts that, when cured, turn into an abrasion resistant paste.



TECHNICAL SPECIFICATIONS

Application:	Reparation of impellers, liners, tubing, elbows of feeding, etc.	Curing Time:	12 Hours. Can be adjusted.
Container:	BUCKET.	Mixing Proportion:	1:2 Hardener - Resin.
Temperature range:	55-90°F.	Pot Life:	45 Minutes.
Colour:	Dark Red.	Article:	Taza® Wear Zirconium / Ceramic.
Compound:	Polymer with Zirconium pearl / Ceramic pearl.	Kit Size:	30 pounds.
It includes:	Resin, hardener and accessories.		

BEFORE



AFTER



TAZA® FLEX 70 & 80

Taza® Flex 70 & 80 - Is a two-component polymer cold cured system RTV (room temperature vulcanized). It is used to repair holes, tears, cracks, splices in conveyor belts in the mining industry, as well as for the repair and molding of elastic parts that, when cured, becomes an elastomer of medium hardness and high abrasion resistance.



12 HOURS AT 77° F TEMPERATURE

COLOUR:	DARK RED	DIELECTRIC RESISTANCE:	350 volts/mils
S.G.	1.2	MAXIMUM ELONGATION:	400%
CURED HARDNESS:	80-85 SHORE A	SHELF LIFE:	12 MONTHS
CURING TIME:	3 Hours	MIXING TIME:	1-6 minutes
CHARACTERISTICS	TAZA® FLEX @ 77°F	POT LIFE:	7-10 minutes

| COVEYOR BELT REPAIR |

CHARACTERISTICS	TAZA FLEX
COLOUR:	DARK RED
HARDNESS:	80 - 85 SHORE A
CURING TIME:	3 HOURS
ABRASION RESISTANCE:	200 mg lost 1,000 rev.
DIELECTRIC RESISTANCE:	350 Volts / mils
TEAR RESISTANCE:	420 PLI
KIT SIZE:	1 & 4 POUNDS

| BEFORE



| AFTER



TAZA® BACKING

Taza® Backing - It is an easy-to-mix, two-component epoxy system with high compressive and impact strength recommended for pouring into rotary cone crushers as a back-up component.



Technical Specifications:

Repair in crushing or grinding systems	It includes:	Resin and Hardener
Pail	Curing Time:	8 hours
55-90° F	Mixing ratio:	9:1 (Resin - Hardener)
Red	Mixing time:	10 minutes
Two component epoxy system	Kit Size:	22 Pounds
	Product:	Taza® Backing

www.taza.mx

HIGH ENGINEERED POLYMERS

Elastómeros Taza S.A de C.V

Priv. Jaime Nunó #4, Col San Jerónimo Tepetlcalco,
Tlalnepantla Estado de México C.P 54090.

Phone +52 (55) 5398-7811

Mail ventas@taza.mx
